



CONTENTS

GP & J BAKER

Signature Wallpaper II

Chifu

Essential Colour II



GP & J BAKER

SIGNATURE WALLPAPER II

At the heart of GP & J Baker lies its incredible archive. This collection celebrates the company's fantastic heritage with some of its most beautiful and iconic designs enhanced by the addition of the archival Chifu a stunning interpretation of an 18th century Qing dynasty dragon robe. Two differing geometrics, Herringbone and Langdale Trellis harmonise perfectly both in colour and style with this superb collection.

Magnificent patterns of Oriental peonies, and magnolias, leafy ferns, Persian landscapes, Chinese fire dragons and antique ikat textiles will inspire a whole range of looks and styles perfect for the modern interior.

The striking colour palette ranges from verdant greens on grounds of antique pink, Chinese yellow, rich teals, and carmine and bronze to cooler delft blues and sophisticated neutrals.

Chifu BW45087

Taken from the archive, this dramatic Chinoiserie design of swirling dragons, formalised clouds and branches laden with blooms is based on an 18th century Chinese imperial dragon robe. Rich in symbolic meaning denoting power, strength and good luck, the number of dragon motifs traditionally revealed the wearer's rank and status. 'Chifu' has now been interpreted as a spectacular wallpaper.

Number of Colours 5

Roll Width 52cm

Vertical Repeat 61cm

Roll Length 10m

Pattern Match Straight Match

Available as a fabric



Chifu BW45087

Emperor's Garden BW45000

This design is derived from a group of hand-painted Chinese wallpapers discovered in a manor house in Kent. The lavish floral of peonies in full bloom with cherry blossom entwining fruit and birds of paradise has been skilfully translated into this exquisite new version.

Number of Colours 4

Roll Width 52cm

Vertical Repeat 61cm

Roll Length 10m

Pattern Match Straight Match

Available as a fabric



Emperor's Garden BW45000

Ferns BW45044

'Ferns' was created by the textile artist Joseph M. Doran and purchased by GP & J Baker in 1935. Originally based on a series of botanical drawings of the late 18th century, a record of plants growing within a 10 mile radius of London, this has now become one of GP & J Baker's most loved designs.

Number of Colours 10

Roll Width 52cm

Vertical Repeat 53cm

Roll Length 10m

Pattern Match Straight Match

Available as a fabric



Ferns BW45044

Heron & Lotus Flower BW45089

One of GP & J Baker's most famous prints, originally designed by William Turner in 1913, shows graceful herons standing amidst lotus flowers and flitting dragonflies and has now been translated into a stunning silhouette design creating an extremely elegant wallpaper.

Number of Colours 5
Roll Width 52cm
Vertical Repeat 64cm
Roll Length 10m
Pattern Match Half Drop



Heron & Lotus Flower BW45089

Ikat Bokhara BW45090

In the 19th century, the Silk Road desert oases of Bokhara, Samarkand and Kashgar were famous for their fine silk ikats. Traditionally rich and vibrant in colour to complement the bold patterns of the ikat design, our Bokhara wallpaper palette also includes the softer hues of blush and sand to add a different dimension to the classic ikat colours.

Number of Colours 6
Roll Width 52cm
Vertical Repeat 64cm
Roll Length 10m
Pattern Match Straight Match
Available as a fabric



Ikat Bokhara BW45090

Herringbone BW45085

A striped herringbone providing visual texture and designed to co-ordinate with all our 'Signature' wallpapers, this graphic design also makes a confident stand-alone statement.

Number of Colours 5
Roll Width 52cm
Vertical Repeat 26cm
Roll Length 10m
Pattern Match Random



Herringbone BW45085

Hydrangea Bird BW45091

GP& J Baker's magnificent 'Hydrangea Bird', was painted in 1917 by William Turner, an important textile designer of the time. This hugely successful design is still as popular over a hundred years later. Inspired by a fragment of Chinese wallpaper dating from the late 18th century it depicts majestic pheasants in an exotic flowering tree.

Number of Colours 2
Roll Width 70cm
Vertical Repeat 113cm
Roll Length 10m
Pattern Match Half Drop
Available as a fabric



Hydrangea Bird BW45091

Langdale Trellis
BW45071

Re-coloured and updated to harmonise with this collection, the Chinoiserie style of 'Langdale' was inspired by the delicacy of the carved fretwork of the Chippendale chairs found at the Royal Pavilion in Brighton.

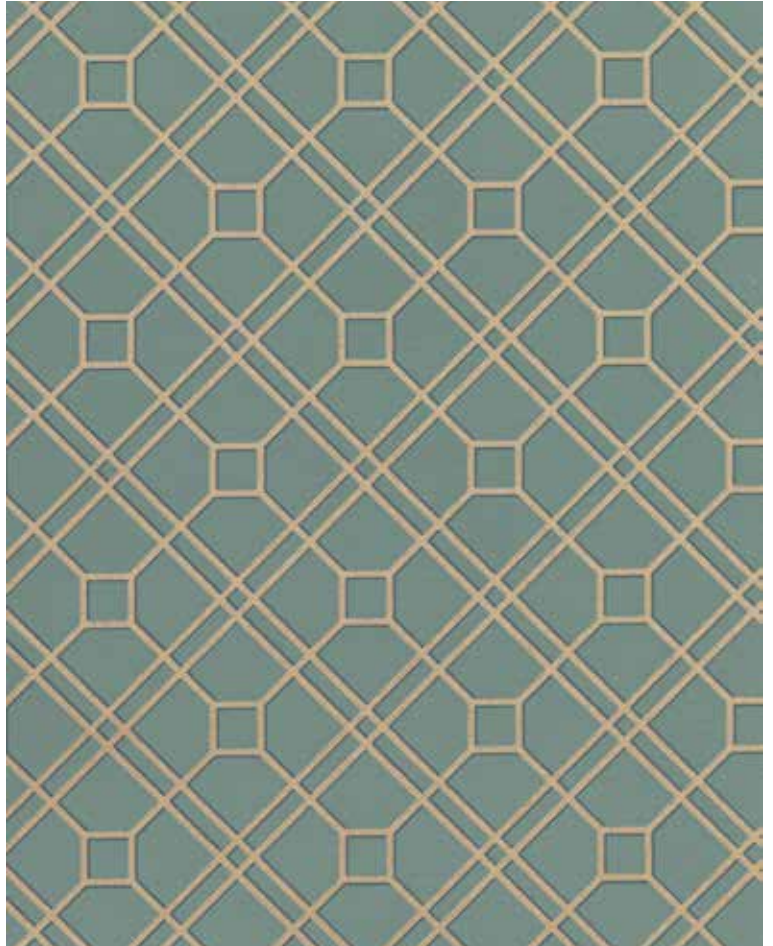
Number of Colours 7

Roll Width 52cm

Vertical Repeat 17.5cm

Roll Length 10m

Pattern Match Straight Match



Langdale Trellis BW45071

Magnolia
BW45092

'Magnolia' remains one of the best loved designs painted by William Turner for GP & J Baker in 1913. This exuberant pattern is in the tradition of the flowering trees to be found in antique hand painted Chinese wall panels. The magnolia flowers have been enlivened with large bursts of chrysanthemum and hydrangea blossom, while butterflies hover amid the fragrant scene.

Number of Colours 3

Roll Width 70cm

Vertical Repeat 95.5cm

Roll Length 10m

Pattern Match Half Drop

Available as a fabric



Magnolia BW45092

**Ramayana
BW45088**

In a naive 17th century illustration of a Persian country park, a small lake filled with lotus flowers and trees heavy with ripening peaches form the backdrop to horsemen and their attendants setting out for a day's hunt.

Number of Colours 4

Roll Width 68.5cm

Vertical Repeat 91.5cm

Roll Length 10m

Pattern Match Straight Match

Available as a fabric



Ramayana BW45088

HANGING INSTRUCTIONS

IMPORTANT

Before cutting and hanging wallpaper or borders please inspect every roll to ensure that they all have the same batch number, are in good condition and that the edges match correctly. The company cannot accept any liability for defects in the condition of the product or matching which are apparent at the time of hanging, nor can the company be responsible for any consequential loss. All labels should be retained until hanging is complete and to your satisfaction.

Preparation: Walls should be clean, firm and dry. Roughen any painted surfaces with glass/sandpaper to form a key. Remove any old wallcoverings and fill in any holes and cracks. Size any absorbent surfaces. Scrape powdery or flaky areas and paint with a suitably prepared size, or oil based primer, allowing it to dry completely.

Lining: It is important that the walls are horizontally cross-lined, using a good quality lining paper. The adhesive used should be the same as that on the final wallpaper. The lining should be allowed to dry out fully before hanging our wallcoverings.

Adhesive: This is a 'paste the wall' product. The decorator should paste the wall and NOT the back of the wallpaper. Ensure that a good quality ready mixed light grade starch or wheat based adhesive containing fungicide is used with this wallcovering. The following are NOT suitable for hanging this product and may cause staining or damage to the surface of the paper: medium weight and heavy weight vinyl adhesives, powder paste and PVC based adhesive. The recommended adhesive is available from GP & J Baker in 5kg and 10kg containers. This is a light grade, maize starch based PVA (non-plasticised), ready mixed paste containing fungicide.

Application: Cut your lengths allowing for pattern matching and for final trimming top and bottom. DO NOT assume that the wallpaper will come off the roll the right way up – this should always be checked and if unsure consult the pattern book, check with your retailer or ring customer services on +44 (0)1202 266 700. (USA customers only, call 1-888-533-5632) This is a 'paste the wall' product. Paste should be evenly applied to the wall to hang one length at a time, to an area slightly wider than the width of the roll. Use a plumb line when hanging the first length and smooth the paper onto the wall, using a paperhanger's brush, from the centre of the length to the edge to expel air bubbles. Try to avoid getting adhesive on the printed surface, as dried paste will damage the surface of printed wallpaper. If it is unavoidable, gently wipe off with a clean damp sponge whilst it is moist, making sure to rinse the sponge thoroughly throughout the cleaning process using clear water only and no soap or cleaning liquids of any kind. After hanging 3 or 4 lengths, we strongly recommend that you inspect the result to ensure no shading or other faults are present. Ideally the wallpaper should be left overnight to dry before inspection. NO claim for redecorating costs can be allowed once more than one roll has been hung. Special care should be taken when hanging very pale colours as joins are inevitably more apparent. Butt-join subsequent lengths. If sufficient paste has been applied there should be no need to use a seam roller or paper hanger's brush to smooth down edges. It is advised that completed whole areas are wiped down with a clean damp sponge to give a consistent lustre upon drying. Good ventilation and an even temperature will assist in the even drying of wallpaper.

Wallpaper care: This wallpaper has a matt finish which permits the removal of surface marks by gently dabbing with a moist sponge. Do not scrub or use any abrasive cleaning agents.

Contract Use: This wallpaper complies with the requirements for European standard EN13501-1:2007/2002 + A1:2009, EN15102: 2007 + A1: 2011 Fire Class B-s1,d0. Therefore it is suitable for use in a contract situation.

This information is supplied in good faith, but without guarantee and on the understanding that the installer will have decorating knowledge to work with differing site or atmospheric conditions.



CHIFU-CHARCOAL / MULTI BW45087/5

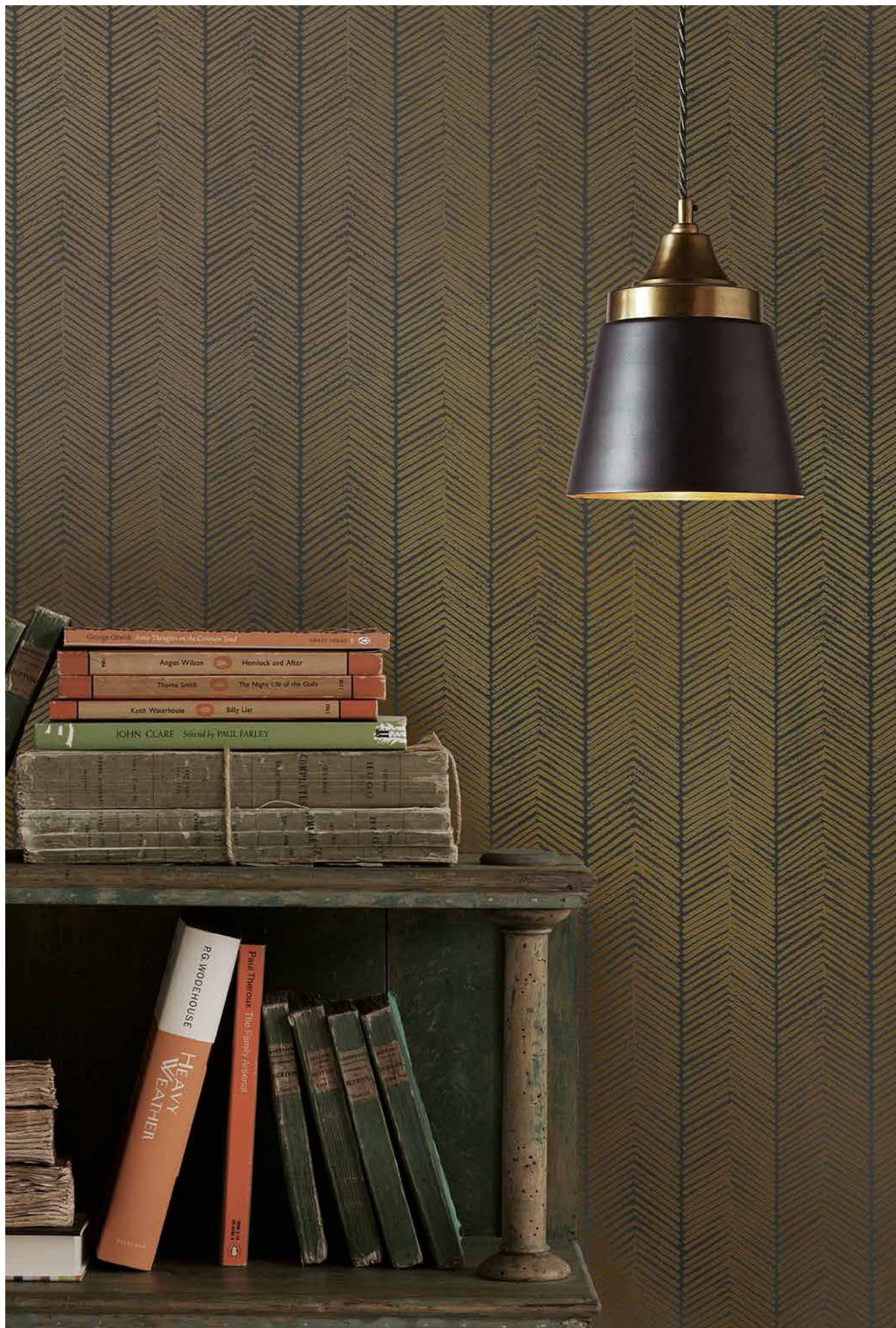


EMPEROR'S GARDEN-BLUE BW45000/9





HERON AND LOTUS FLOWER-BLACK AND WHITE BW45089/1



HERRINGBONE-CHARCOAL / BRONZE BW45085/5



HYDRANGEA BIRD-CHARCOAL / SIENNA BW45091/2



IKAT BOKHARA-EMERALD BW45090/3







LANGDALE TRELLIS-LINEN BW45071/8



GP & J BAKER

CHIFU

At the heart of GP & J Baker lies its incredible archive. This collection celebrates the company's fantastic heritage with some of its most beautiful and iconic designs enhanced by the addition of the archival Chifu a stunning interpretation of an 18th century Qing dynasty dragon robe and Ikat Bokhara, a brilliant version of a traditional design. The additions of Merrin, a pretty mini screen print, a smart jacquard weave Senara, and the multi-coloured Balfour offer geometric and smaller scale motifs that complement this superb collection.

Chifu BP10852

Taken from the archive, this dramatic Chinoiserie design of swirling dragons, formalised clouds and branches laden with blooms is based on an 18th century Chinese imperial dragon robe. Rich in symbolic meaning denoting power, strength and good luck, the number of dragon motifs traditionally revealed the wearer's rank and status. 'Chifu' has now been interpreted as a spectacular wallpaper.

Number of Colours 3
Composition 100% Linen
Repeat 78cm
Width 133cm



Chifu Velvet
BP10854

Taken from the archive, this dramatic Chinoiserie design of swirling dragons, formalised clouds and branches laden with blooms is based on an 18th century Chinese imperial dragon robe. Rich in symbolic meaning denoting power, strength and good luck, the number of dragon motifs traditionally revealed the wearer's rank and status. 'Chifu' has now been interpreted as a spectacular wallpaper.

Number of Colours 1

Composition 90% Cotton,
10% Polyester

Repeat 77cm

Width 133cm



Hydrangea Bird (Archive)
BP10851

GP& J Baker's magnificent 'Hydrangea Bird', was painted in 1917 by William Turner, an important textile designer of the time. Inspired by a fragment of Chinese wallpaper dating from the late 18th century it depicts majestic pheasants perched in an exotic flowering tree. This hugely successful design is still as popular over a hundred years later.

Number of Colours 5

Composition 100% Linen

Repeat 98cm

Width 120cm



Ikat Bokhara **BP10853**

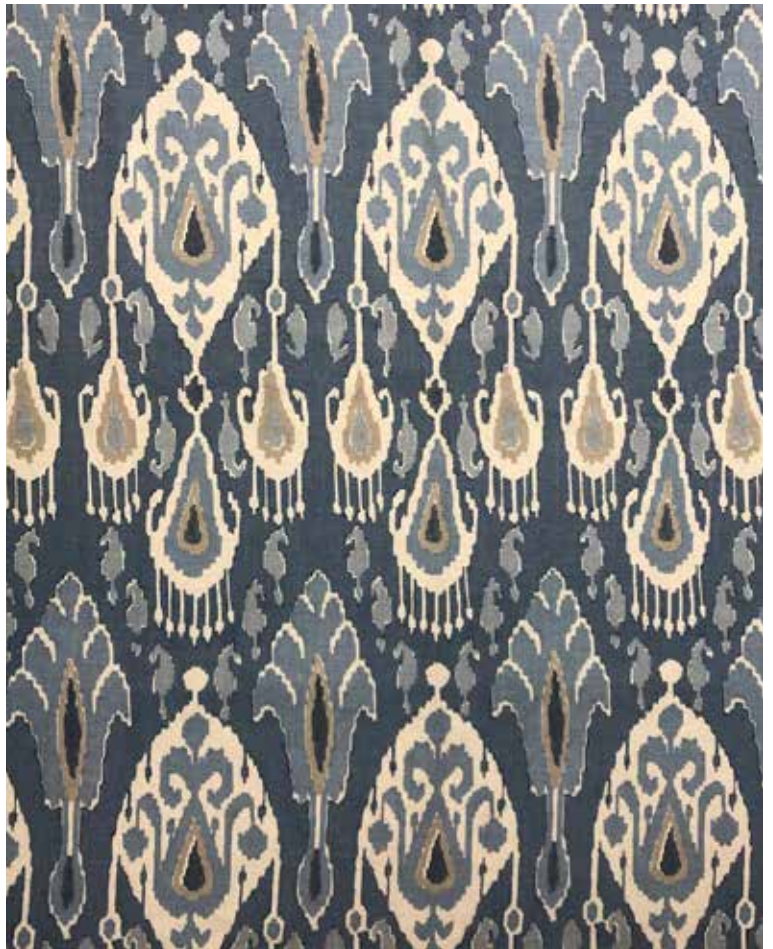
In the 19th century, the Silk Road desert oases of Bokhara, Samarkand and Kashgar were famous for their fine silk ikats. Sourced from the archive the original version dates from 1906. Traditionally rich and vibrant in colour to complement the bold patterns of the ikat design, our Bokhara palette also includes the softer hues of a delicate neutral and sand.

Number of Colours 6

Composition 49% Viscose, 26% Linen, 17% Cotton, 8% Polyester

Repeat 69cm

Width 130cm



Imari **BP10856**

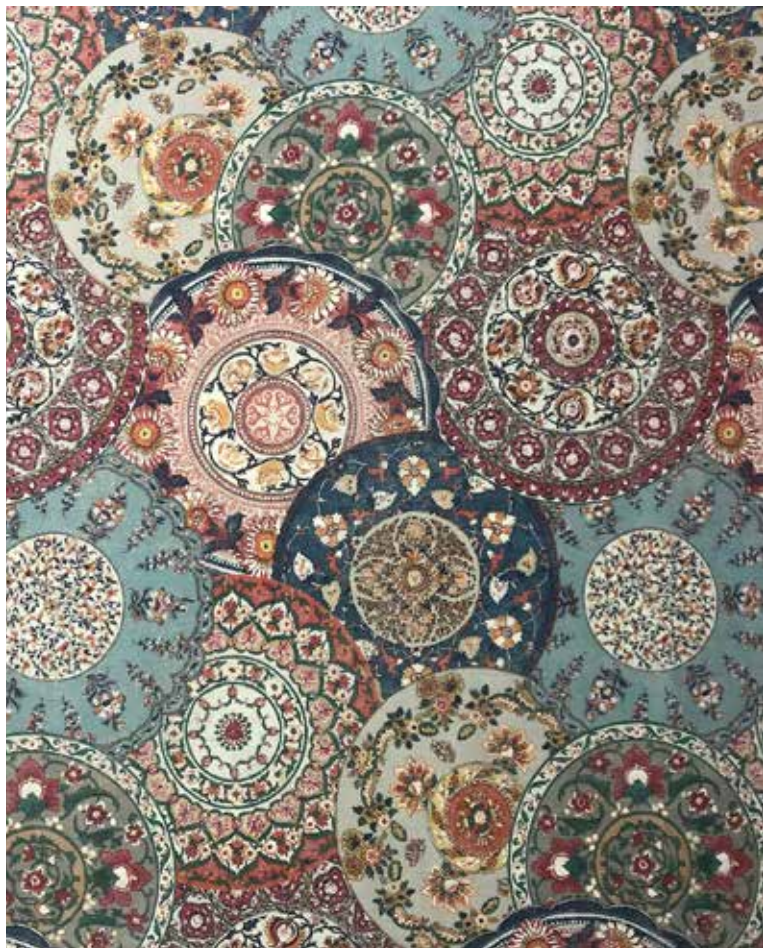
This exquisite design is a collage of delicate Imari plates, a style of porcelain named after the Japanese port from which it was shipped to the West beginning in the late 17th century. Originally made in the town now known as Arita, it took its design cues from the Japanese textile patterns of the day with rich ornamentation, intricate designs of flowers and traditional abstract patterns.

Number of Colours 4

Composition 49% Viscose, 26% Linen, 17% Cotton, 8% Polyester

Repeat 62cm

Width 137cm



Balfour
BP10855

Based on an antique Khasak tapestry, this small scale, multi coloured design with its harmonious and decorative motifs provides an informal element to the collection. Balfour is printed on a heavily textured ground emulating the stitching of these original tapestries.

Number of Colours 4

Composition 82% Viscose,
18% Linen

Repeat 17cm

Width 137cm

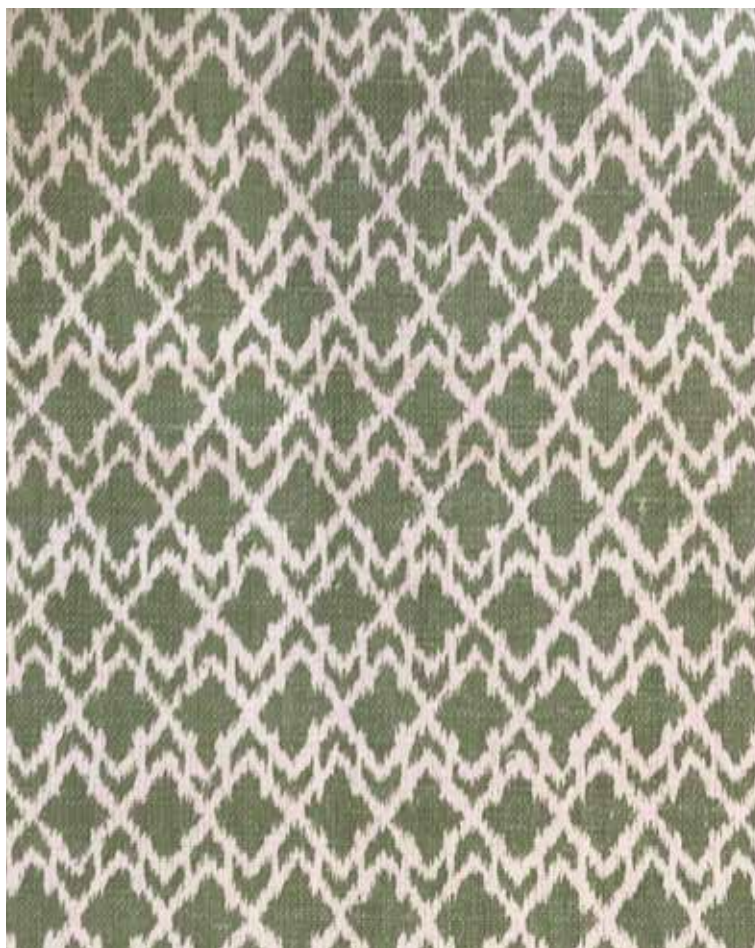


Merrin
BP10889

Small scale printed diamond motifs flow seamlessly across the width of this attractive design. Merrin's accessible colour palette ensures it is the perfect companion to the rest of the collection.

Number of Colours 4

Composition 52% Linen 48% Cotton



Senara
BP10882

This striking woven jacquard imitates the soft blurred lines of a warp printed ikat with its delicate decorative motifs bordered by stripes of differing widths. The perfect mid-scale of Senara makes it an excellent choice for upholstery.

Number of Colours 3

Composition 88% Cotton,
12% Polyester

Repeat 11cm

Width 136cm





FROM TOP: HYDRANGEA BIRD-GREEN, MERRIN-GREEN



FROM TOP: HYDRANGEA BIRD-EMERALD/BLUE, MERRIN-GREEN, SENARA-INDIGO, IKAT BOKHARA-BLUE



FROM TOP: IKAT BOKHARA-TEAL, BALFOUR-RED/GREEN, SENARA-AQUA





FROM TOP: CHIFU-TEAL, SENARA-SAND, IMARI-TEAL, SENARA-AQUA



CHIFU-CHARCOAL MULTI



FROM TOP: MERRIN-BLUE, GREEN, AQUA, STONE



GP & J BAKER

ESSENTIAL COLOUR II

'Essential Colour II' is a wonderful mix of colour and texture. This extremely comprehensive collection contains both new and innovative weaves as well as some of our most popular classics creatively curated.

These beautiful raised bouclés, soft chenilles, luxurious velvets, smart linens, stylish herringbones and versatile plains, in a palette of both warm and cool neutrals ranging from soft grey and mole to ivory and bronze, make an indispensable addition to the GP & J Baker weave library.







